

Kluge Entscheidungen

Keine ANA bei unspezifischen Symptomen

Keine Borrelienserologie ohne spezifische Symptome

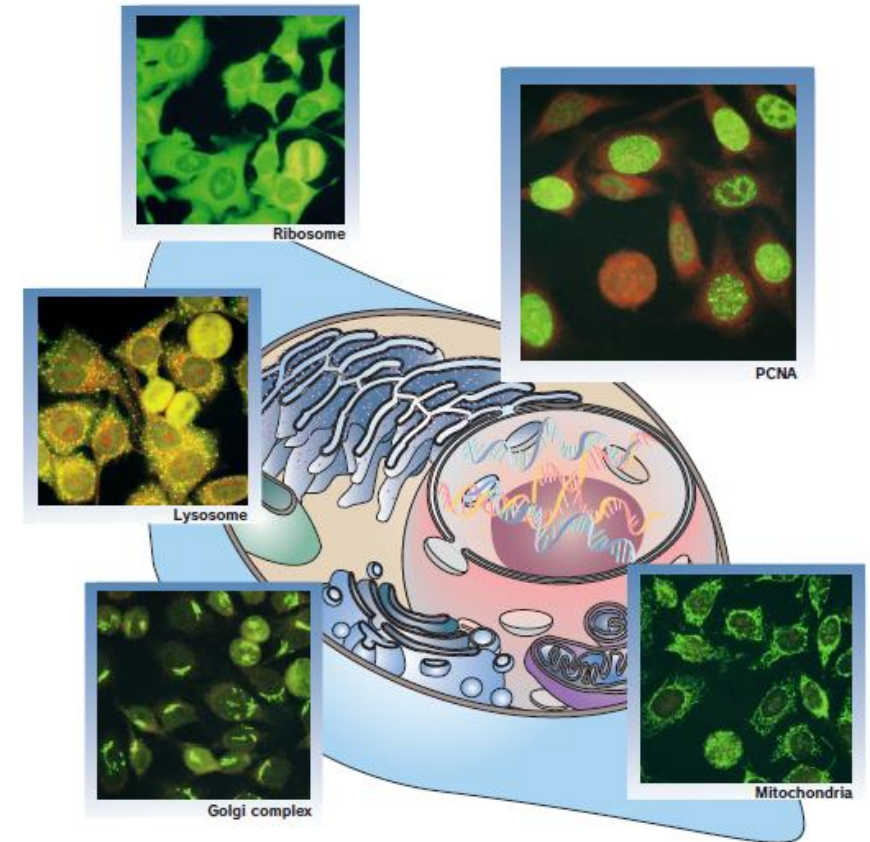
Kein Ausschluss von „Rheuma“ bei normalem Entzündungslabor

Keine Diagnose „Arthritis“ bei unauffälligem MRT

Keine Diagnose „Fiebersyndrom“ ohne erhöhtes Entzündungslabor im Anfall

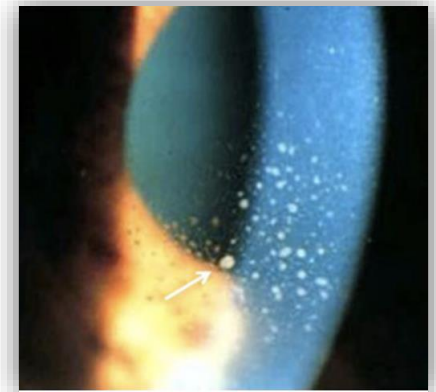
ANA bei Gesunden nachweisbar

- Bei Gesunden in 13 % $> 1:80$
- Pubertät 45 % $> 1:80$, 33 % $> 1:160$
- ohne klinische Symptome keine Bedeutung



Juvenile idiopathische Arthritis

- Klinisch oder bildgebend Erguss nachgewiesen
- ANA in 60 % erhöht
- Risikofaktor für Uveitis



Entry criterion
Antinuclear antibodies (ANA) at a titer of $\geq 1:80$ on HEp-2 cells or an equivalent positive test (ever)



If absent, do not classify as SLE
If present, apply additive criteria



Additive criteria

Do not count a criterion if there is a more likely explanation than SLE.
Occurrence of a criterion on at least one occasion is sufficient.
SLE classification requires at least one clinical criterion and ≥ 10 points.
Criteria need not occur simultaneously.

Within each domain, only the highest weighted criterion is counted toward the total score.

Clinical domains and criteria	Weight	Immunology domains and criteria	Weight
Constitutional		Antiphospholipid antibodies	
Fever	2	Anti-cardiolipin antibodies OR	
Hematologic		Anti- β 2GP1 antibodies OR	
Leukopenia	3	Lupus anticoagulant	2
Thrombocytopenia	4	Complement proteins	
Autoimmune hemolysis	4	Low C3 OR low C4	3
Neuropsychiatric		Low C3 AND low C4	4
Delirium	2	SLE-specific antibodies	
Psychosis	3	Anti-dsDNA antibody* OR	
Seizure	5	Anti-Smith antibody	6
Mucocutaneous		Aringer et al 2019 EULAR/ACR Classification Criteria for SLE	
Non-scarring alopecia	2		
Oral ulcers	2		
Subacute cutaneous OR discoid lupus	4		
Acute cutaneous lupus	6		
Serosal			
Pleural or pericardial effusion	5		
Acute pericarditis	6		
Musculoskeletal			
Joint involvement	6		
Renal			
Proteinuria $>0.5g/24h$	4		
Renal biopsy Class II or V lupus nephritis	8		
Renal biopsy Class III or IV lupus nephritis	10		

Total score:



Classify as Systemic Lupus Erythematosus with a score of 10 or more if entry criterion fulfilled.



ANA obligat bei Lupus erythematoses
--> Rasche stationäre Abklärung der Organbeteiligung u Therapieinitiierung